



NEMA Motor Data

MLFB-Ordering data : 1LE2221-2BA11-4AA3

Client order no. :
Order no. :
Offer no. :
Remarks :

Item no. :
Consignment no. :
Project :

Nameplate Data	Mounting and motor protection
----------------	-------------------------------

Type:		Rating	Cont.
HP	15.0	Ins. Class	Class F (Standard)
Voltage	(14) 208-230/460V,	S.F.	1.15
Amps	35.0 / 17.5 A	Amb. Temp.	40 deg C
FL RPM	3530	Temp. Rise	Class B
FL Efficiency	91.0 %	kVA Code	G
FRAME	254T	NEMA Des	B
DE AFBMA	45BC02JPP30	Mtr WT	257.94
ODE AFBMA	45BC02JPP30	IP	35
60 Hertz	3 Ph TEFC		

Type of construction	(A) Foot mounted - End shield
Motor protection	(A) No winding protection
Terminal box design	(3) Mounting - F-1

Bearing Data		
	DE	ODE
Bearing Size	6209 ZZ C3 S0	6209 ZZ C3 S0
Bearing Type	Ball Bearing	Ball Bearing
AFBMA	45BC02JPP30	45BC02JPP30

Typical Performance Data					
Load	No Load	1/2	3/4	Full Load	LRC
Efficiency		90.7 %	91.3 %	91.0 %	
Power Factor		80.6	87.4	88.2	
Current (A)	5.1 A	9.6 A	13.2 A	35.0 / 17.5	116.0 A
Inverter Duty	VT	20:1	CT	4:1	

Mechanical Data				
SAFE STALL TIME	HOT (s)	24	COLD (s)	48
Rtr wt (lbs)	53.82	Rtr WK2	1.13	
FLT (lb-ft)	22.000	LRT	209	BDT 259
Ext Load Inertia (WK2) Capability	105.0 lb-ft ²			

Typical Noise Data

A-weighted Sound	Octave Band Center Frequencies Hertz (Hz)								
Pressure Level	125	250	500	1000	2000	4000	8000	SPL	83
at 3 feet	53	65	77	78	77	71	61	SPwrL	93

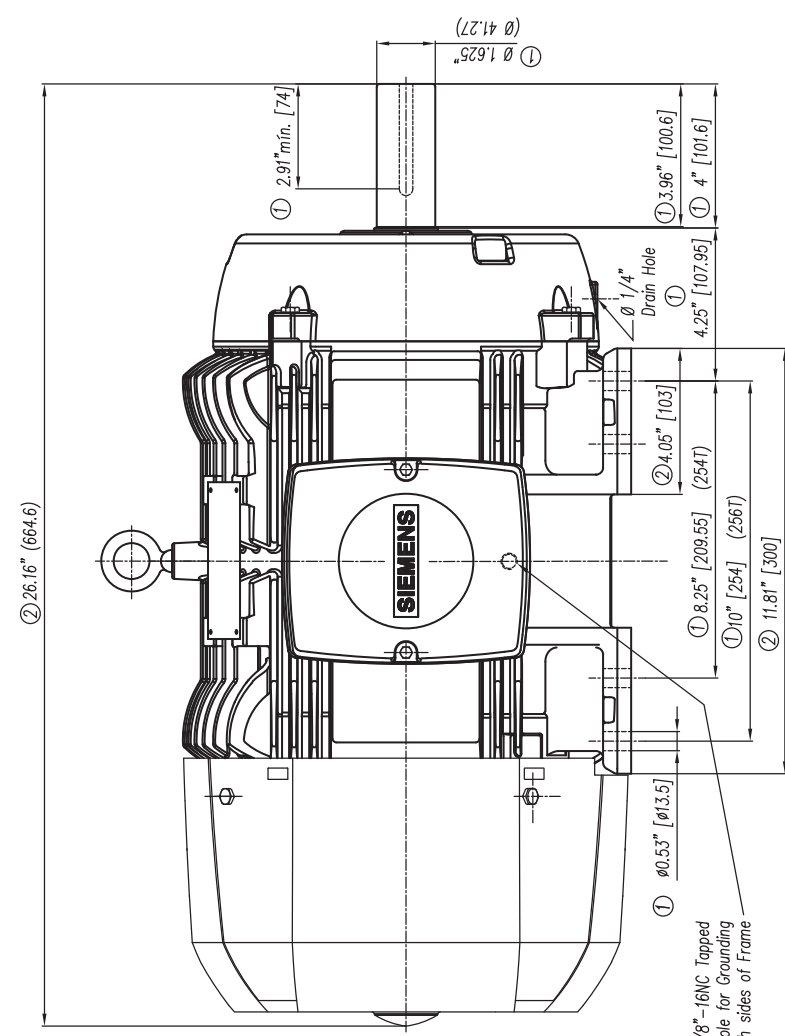
Wiring Connection Information

Description	3 PHASE - 9 LEAD - WYE					
Voltage	L1	L2	L3	Connected together		
LOW	T1 T7	T2 T8	T3 T9	T4 T5 T6 YY		
HIGH	T1	T2	T3	T4 T7-T5 T8-T6 T9 Y		

Special design :

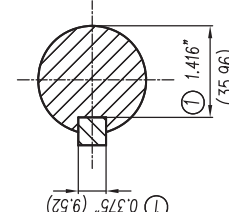
Lubrication Information

Manufacturer	Mobil Polyrex EM or equal
Type	Polyurea (standard)
DE Capacity (oz.)	0.50
ODEnd Capacity (oz.)	0.50



3/8" -16NC Tapped Hole for Grounding both sides of Frame

- ① Tolerancias According to NEMA Std.
- ② All these dimensions corresponding to assemblies and castings shall have a tolerance as per DIN 1686-GTB-19.
- ③ Not According to NEMA Std.



Keyseat detail
Detalle Cuñero

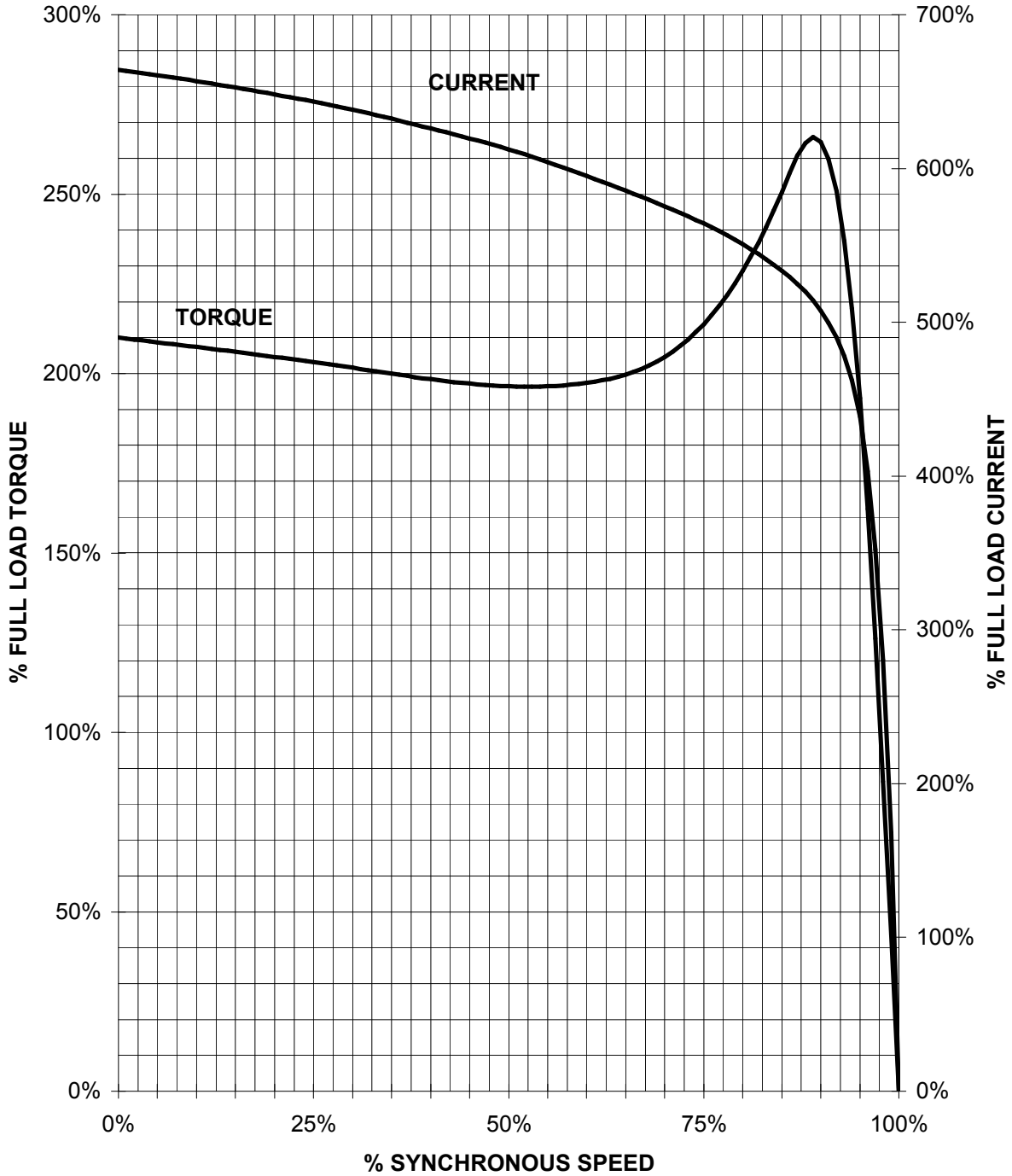
CERTIFIED PRINT/CERTIFICACION			
CUSTOMER/CLIENTE			
IP	ENV	FRANK/ARM	TYPE/ARM
		VOLTS	PHASES
		REV	REV

Tol. in mm. acc. to/ Tol. en mm. según DIN-1686-GTB-19 Over/desde To/hasta		18 ± 4.5 30 ± 4.7 50 ± 5 80 ± 5.5 120 ± 6 180 ± 6.5 250 ± 7 315 ± 7.5 400 ± 8 500 ± 8.5 630 ± 9.5 800 ± 10
European Projection/ Projection Europee	Dim. in inches/Dim. en pulg.	Date/Fecha 05/03/08
Drawn/Elab. Check/Rev. Str.Ctd./Aut.	Name/Nombre Guzmán	Type/ Tipo: GP100
a) Se cambió formato a Inglés-Español y se especificó tipos en los que aplica este dibujo. g) Changed the format to English-Spanish and was specified in what kind of motors apply this drawing.		Scale/ Escala Sin W/O
SIEMENS GUADALAJARA FACTORY		3MSE 223 0850a Ref.
Rep./ 3MSE 223 0850		254/266T Arm.

SIEMENS INDUSTRY, INC.

HP 15 VOLTS < 600V RPM 3600 TYPE GP100
HZ 60 PHASE 3 FRAME 254T NEMA B

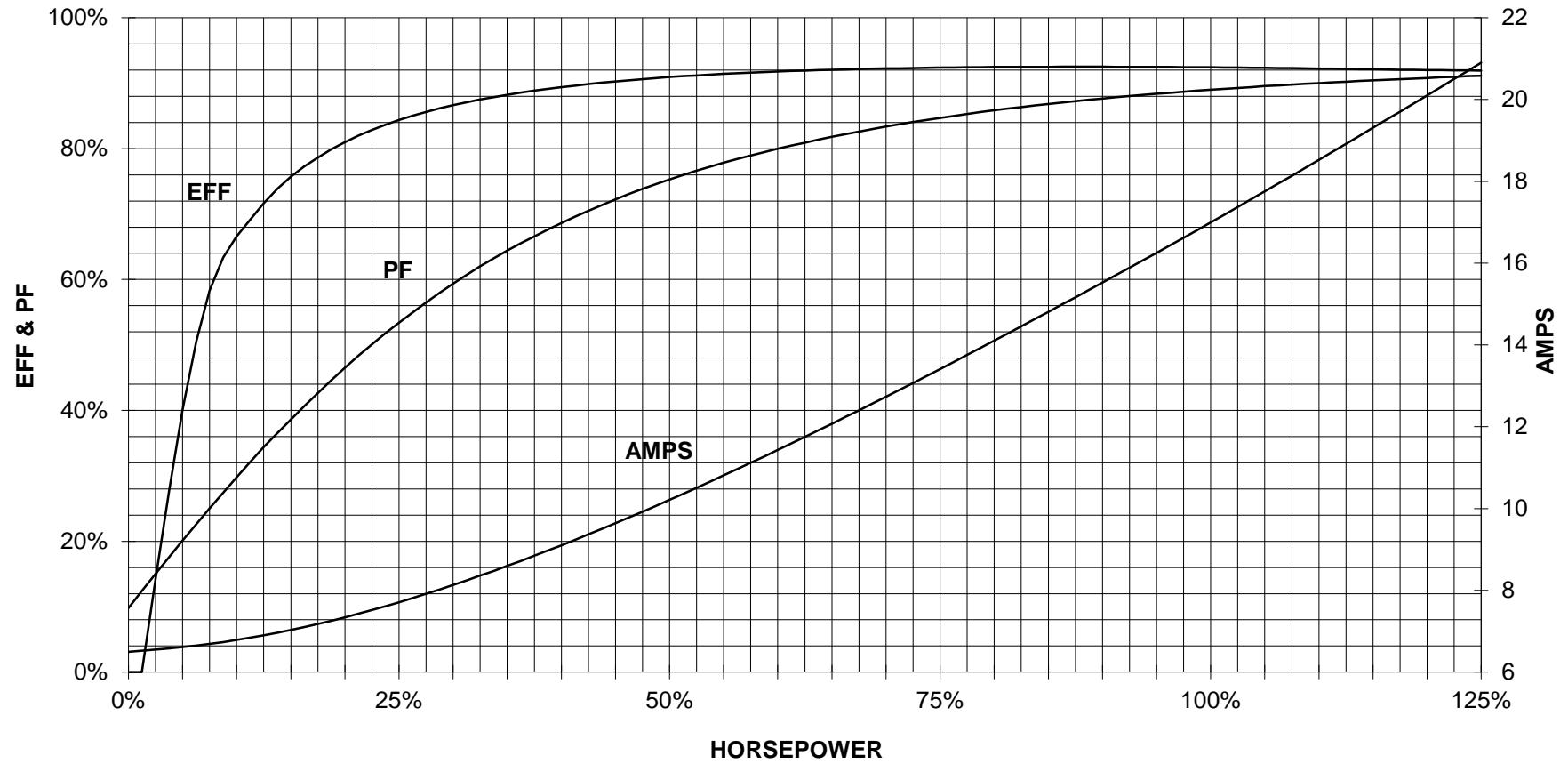
TORQUE & CURRENT VS. SPEED



CUSTOMER: _____ ORDER#: _____

15 HP 3600 RPM 254T FRAME 460 VOLTS 3 PHASE NEMA DESIGN B

SIEMENS INDUSTRY, INC.
PERFORMANCE CURVE
GP100



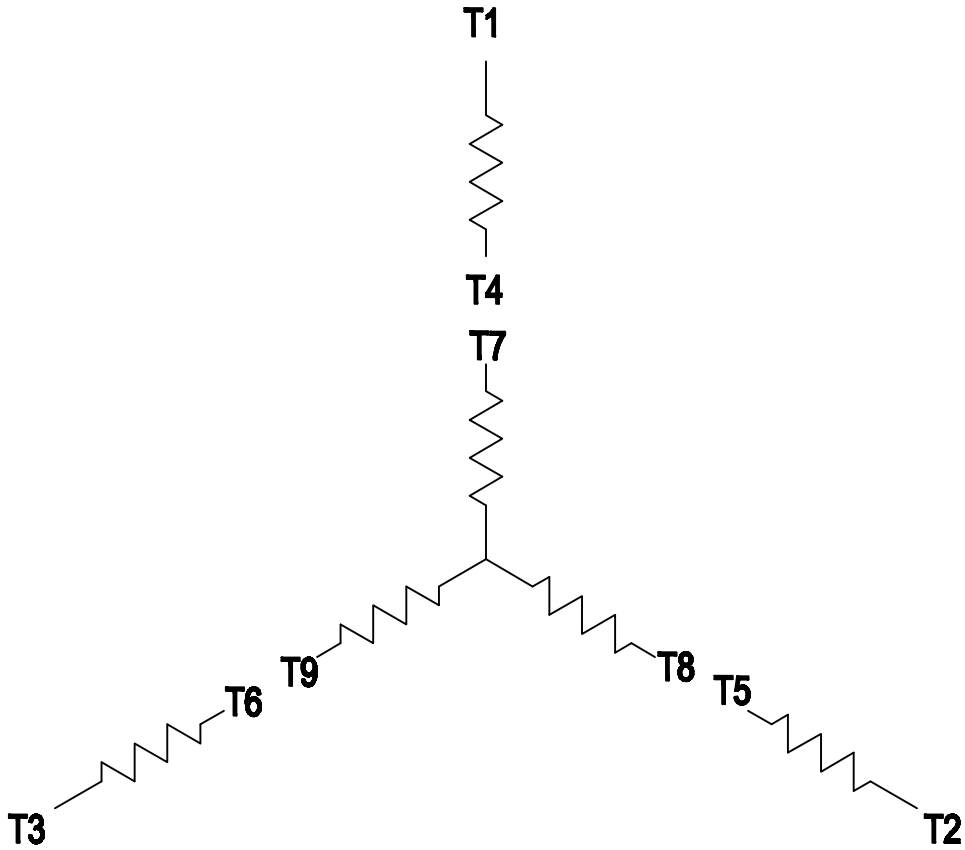
CUSTOMER _____ ORDER # _____ PO # _____

PERFORMANCE BASED ON DESIGN CALCULATIONS. SUBJECT TO CHANGE WITHOUT NOTICE.

REV. 1

3 PHASE - 9 LEADS - WYE

VOLTS	LINES			CONNECTED TOGETHER	CONN.
	L1	L2	L3		
LOW	T1 T7	T2 T8	T3 T9	T4 T5 T6	Y Y
HIGH	T1	T2	T3	T4 T7-T5 T8-T6 T9	Y



THIS IS A CAD DRAWING
DO NOT MAKE MANUAL CHANGES

01 | 09-27-07

TYPE

-CONFIDENTIAL-

PROPERTY OF

Siemens Energy & Automation, Inc.
Industrial Motor Division - Little Rock, AR

FRAME

HP

NAME

WIRING DIAGRAM

VOLTS

RPM

HZ

PH

3

Customer

PO #

SO #

DRAWN	9.24.07	DATE	JRH
CHECKED		DATE	
APP		DATE	

SHEET 1 OF 1

Sim. To

PART NO.

51-382-114-501

A