



NEMA Motor Data

MLFB-Ordering data : 1LE2221-3CB21-6AA3

Client order no. :
Order no. :
Offer no. :
Remarks :

Item no. :
Consignment no. :
Project :

Nameplate Data	Mounting and motor protection
----------------	-------------------------------

Type:		Rating	Cont.
HP	75.0	Ins. Class	Class F (Standard)
Voltage	(16) 230/460V, STD	S.F.	1.15
Amps	170.0 / 85.0 A	Amb. Temp.	40 deg C
FL RPM	1780	Temp. Rise	Class B
FL Efficiency	95.4 %	kVA Code	G
FRAME	365T	NEMA Des	B
DE AFBMA	70BC03JP30	Mtr WT	950.02
ODE AFBMA	70BC02JPP30	IP	54
60 Hertz	3 Ph TEFC		

Type of construction (A) Foot mounted - End shield
Motor protection (A) No winding protection
Terminal box design (3) Mounting - F-1

Bearing Data		
--------------	--	--

	DE	ODE
Bearing Size	6314 Z C3 S0	6214 ZZ C3 S0
Bearing Type	Ball Bearing	Ball Bearing
AFBMA	70BC03JP30	70BC02JPP30

Typical Performance Data					
--------------------------	--	--	--	--	--

Load	No Load	1/2	3/4	Full Load	LRC
Efficiency		95.6 %	95.8 %	95.4 %	
Power Factor		78.0	85.0	87.0	
Current (A)	25.0 A	47.1 A	64.7 A	170.0 / 85.0	543.0 A
Inverter Duty	VT	20:1	CT	4:1	

Mechanical Data				
-----------------	--	--	--	--

SAFE STALL TIME	HOT (s)	25	COLD (s)	35
Rtr wt (lbs)	250.24	Rtr WK2	19.7	
FLT (lb-ft)	221.000	LRT	180	BDT 240
Ext Load Inertia (WK2) Capability	105.0 lb-ft ²			

Typical Noise Data										
--------------------	--	--	--	--	--	--	--	--	--	--

A-weighted Sound	Octave Band Center Frequencies Hertz (Hz)									
Pressure Level	125	250	500	1000	2000	4000	8000	SPL	64	
at 3 feet	42	52	56	58	58	57	52	SPwrL	75	

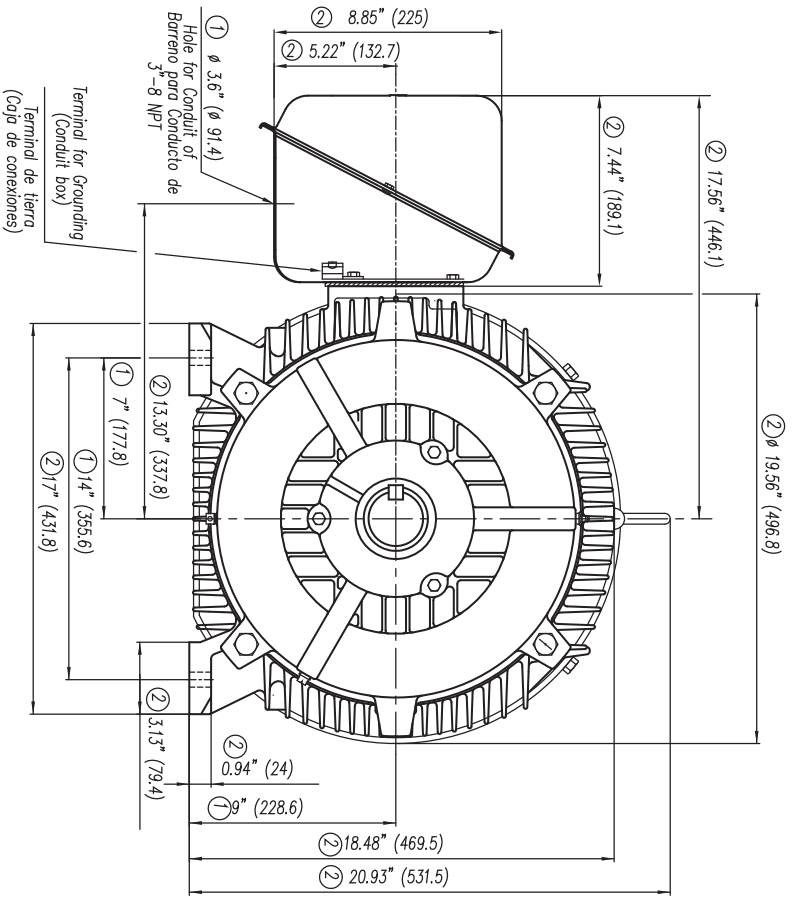
Wiring Connection Information					
-------------------------------	--	--	--	--	--

Description	3 PHASE - 9 LEAD - DELTA				
Voltage	L1	L2	L3	Connected together	
LOW	T1 T7 T6	T2 T8 T4	T3 T9 T5	-- -- --	
HIGH	T1	T2	T3	T4 T7-T5 T8-T6 T9	

Special design :

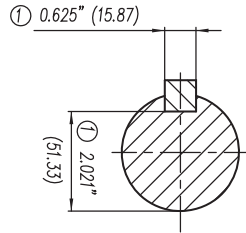
Lubrication Information	
-------------------------	--

Manufacturer	Mobil Polyrex EM or equal
Type	Polyurea (standard)
DE Capacity (oz.)	7.50
ODEnd Capacity (oz.)	6.70

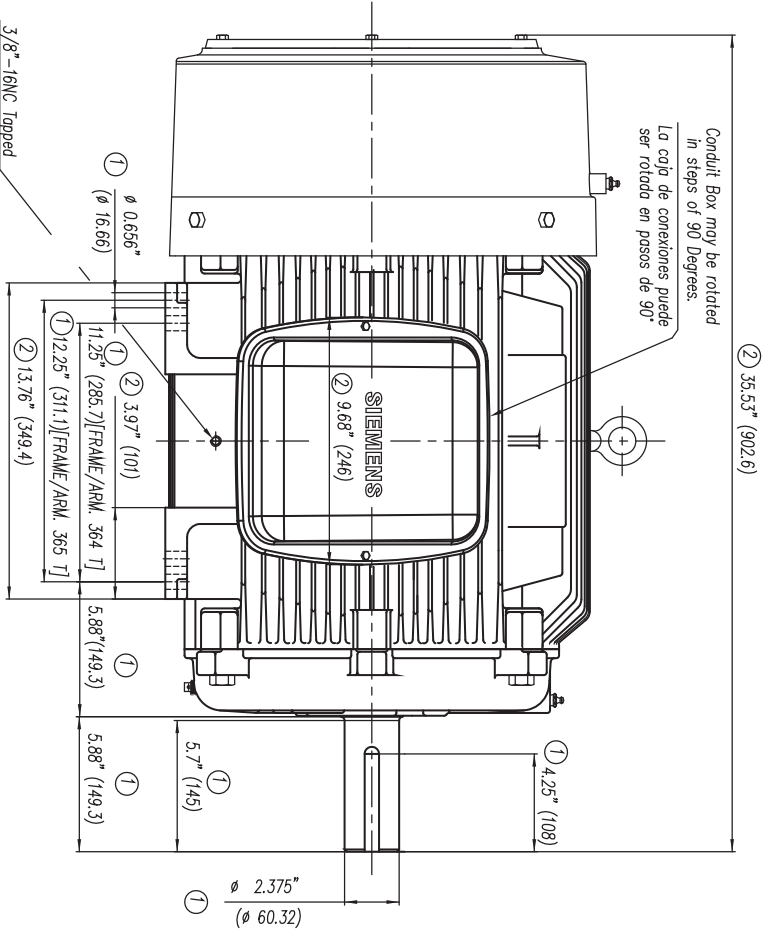


① Tolerancias According to NEMA Std.
 ② All these dimensions corresponding to assemblies and castings shall have a tolerance as per DIN standard 1686-GTB 19.

① Tolerancias acorde a NEMA Std.
 ② Todos estos dimensiones correspondientes a ensambles y fundición en bruto tendrán una tolerancia según DIN 1686-GTB-19



Keyseat detail
 Detalle Cuñero



3/8"-16NC Tapped Hole for Grounding Both sides of Frame (Rosca para Tierra en ambos lados)

Conduit Box may be rotated in steps of 90 Degrees.
 La caja de conexiones puede ser rotada en pasos de 90°

CERTIFIED PRINT / CERTIFICACION			
DESIGN/CLIENTE		SIGNATURE/CLIENTE	
PARTS/COMPANIA		TYPE/PRO	
IP	FRM	FRAME/ARM	IR
		WELLS	PIVOTS

Toll. in mm. acc. to/Toll. en mm. según DIN-1686-GTB-19	Over/desde to/hasta	18	± 4.5
		30	± 4.7
		50	± 5
		80	± 5.5
		120	± 6
		180	± 6.5
		250	± 7
		315	± 7.5
		400	± 8
		500	± 8.5
		630	± 9.5
		800	± 10

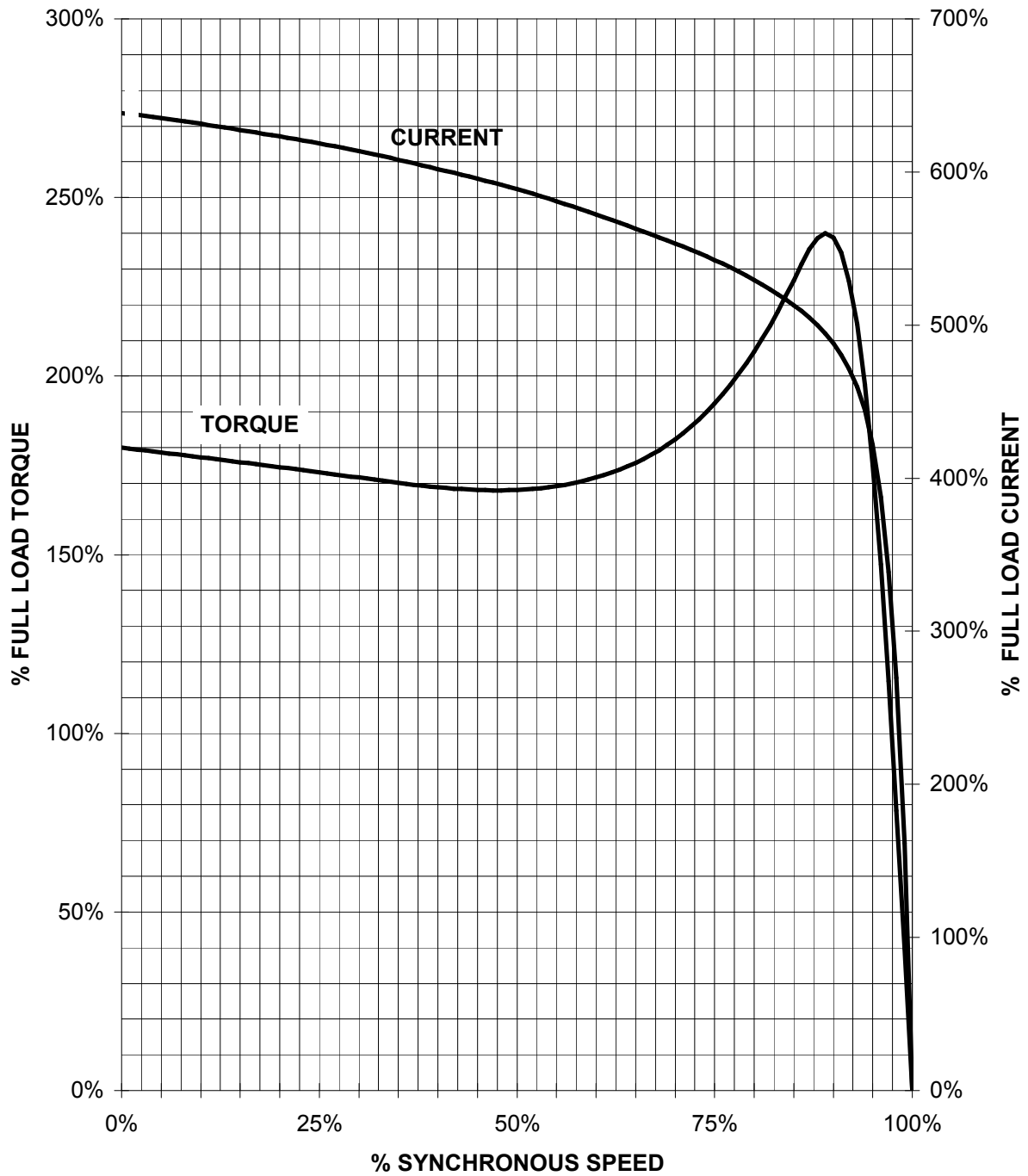
Dim. in inches/Dim. en pulg.	European Projection/Proyeccion Europea	Modific.
Date/Fecha	Name/Nombre	
08/04/10	A. Perez	
Drawn/Elab	Check/Rev.	Std./Ctd./Aut.
08/04/10	A. Red	

SIEMENS GUADALAJARA FACTORY	Outline/Dimensiones Long Shaft/ Espiga Larga 3MSE 730 1410	Scale/ Escala W/O SIN
Ref. 3MSE 730 1155	Rep./ Std.	1/1

SIEMENS INDUSTRY, INC.

HP 75 VOLTS < 600V RPM 1800 TYPE GP100
HZ 60 PHASE 3 FRAME 365T NEMA B

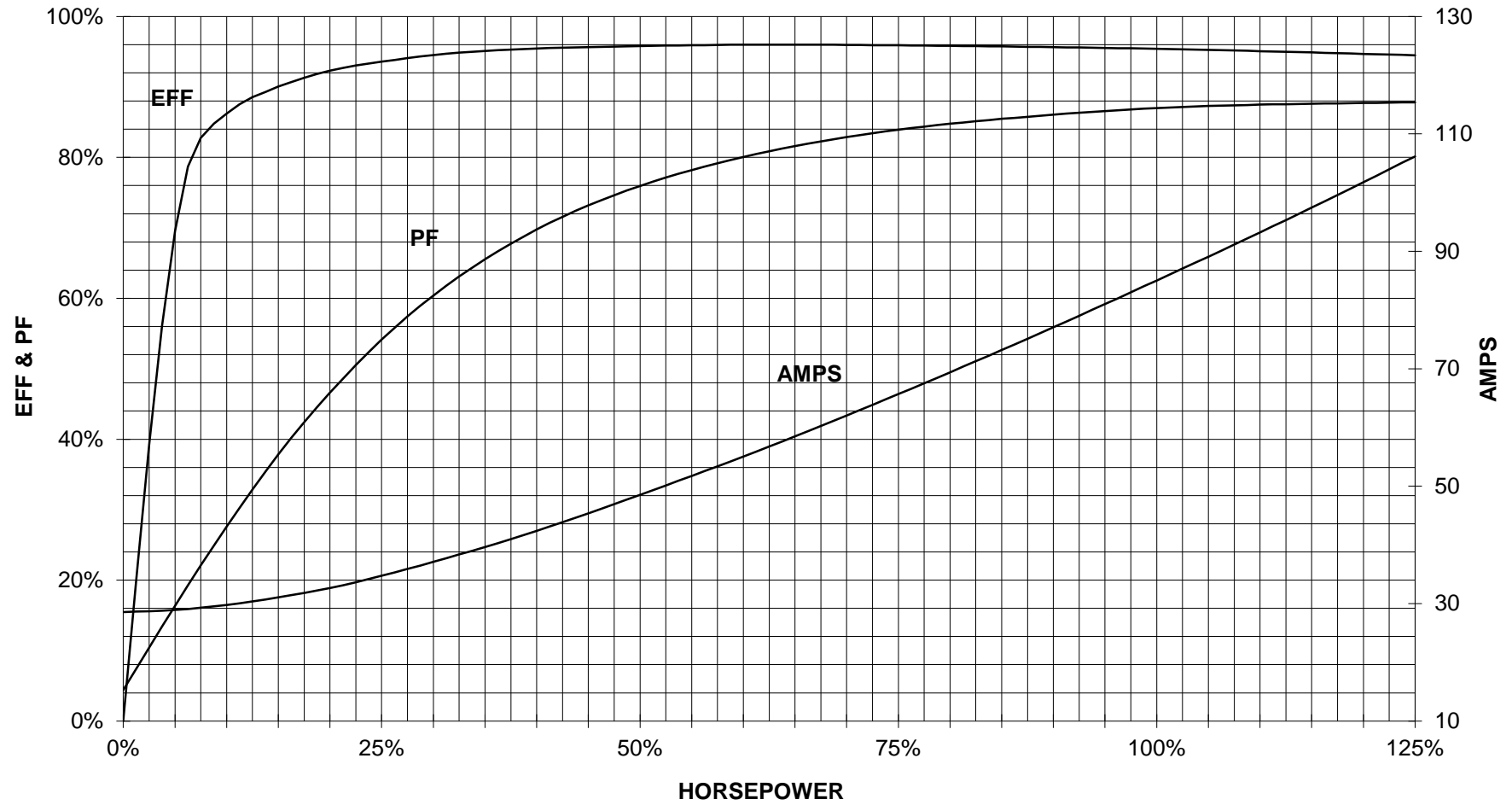
TORQUE & CURRENT VS. SPEED



CUSTOMER: _____ ORDER#: _____

75 HP 1800 RPM 365T FRAME 460 VOLTS 3 PHASE NEMA DESIGN B

SIEMENS INDUSTRY, INC.
PERFORMANCE CURVE
GP100

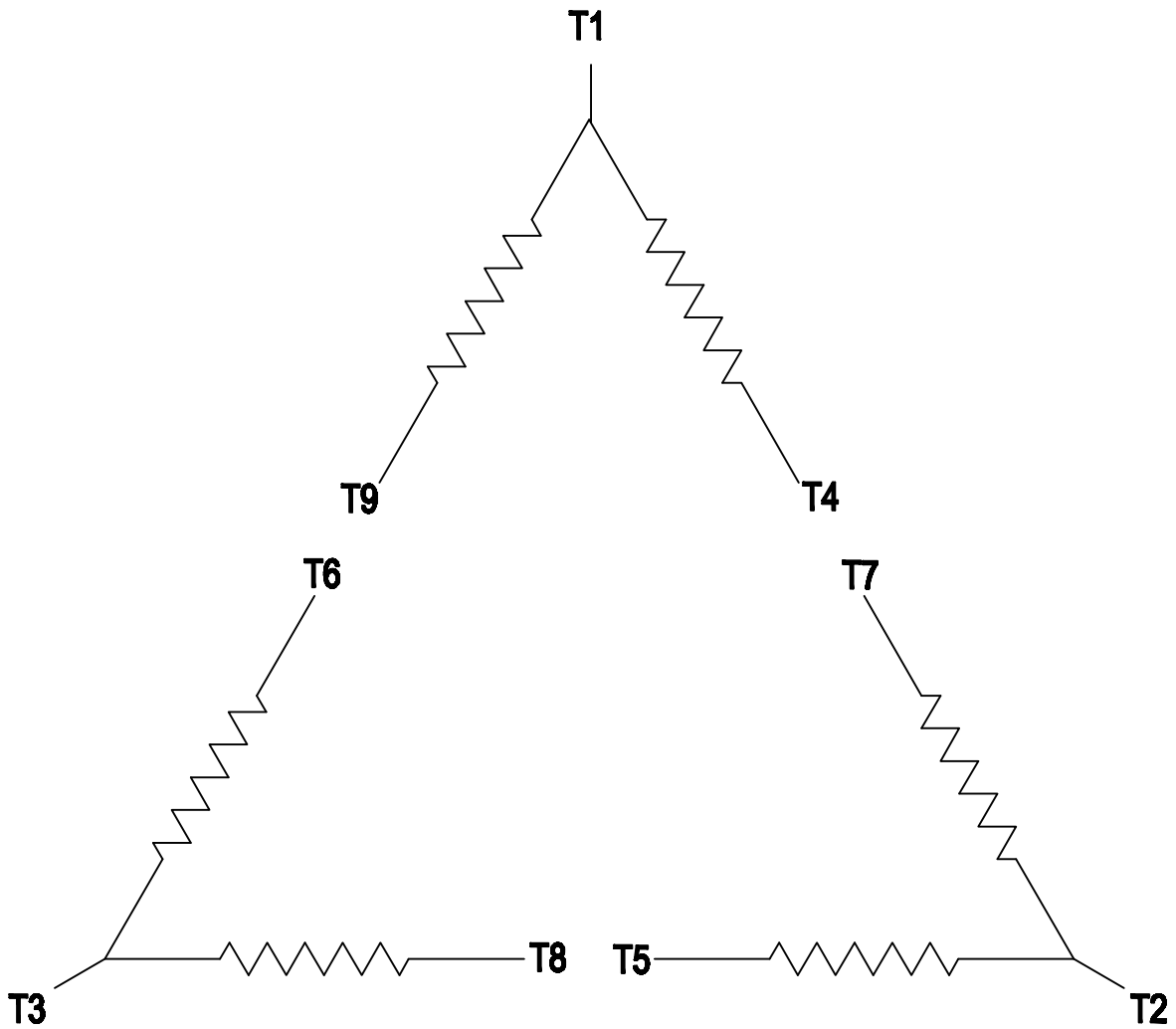


CUSTOMER _____ ORDER # _____ PO # _____

PERFORMANCE BASED ON DESIGN CALCULATIONS. SUBJECT TO CHANGE WITHOUT NOTICE.
REV. 1

2

1



3 PHASE - 9 LEADS - DELTA

VOLTS	LINES			CONNECTED TOGETHER	CONN.
	L1	L2	L3		
LOW	T1 T7 T6	T2 T8 T4	T3 T9 T5		△ △
HIGH	T1	T2	T3	T4 T7-T5 T8-T6 T9	△

THIS IS A CAD DRAWING
DO NOT MAKE MANUAL CHANGES

01	09-27-07	TYPE		-CONFIDENTIAL-				PROPERTY OF Siemens Little Rock, AR	
FRAME		HP		NAME WIRING DIAGRAM					
VOLTS		RPM	HZ	PH 3		Customer			
DRAWN 9.24.07		DATE		JRH		PO #		SO #	
CHECKED		DATE		APP		SHEET 1 OF 1		Sim. To	
						PART NO. 51-382-114-504		A	

2

1